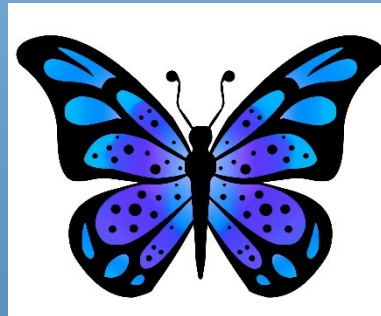


# **Group Representative** **Orientation**

Panel 61




# **Group Representative (GR) Orientation**

**As a Group Representative (GR) you are the first link in the chain that leads to our World Service Conference. The GR is a vital link between the individual Al-Anon Family Group, the District and Area 9. At Assembly you *are* the voice of Al-Anon in Area 9.**





# Group Representative (GR) 1

Basic Housekeeping at Assembly

 **Registration closes at 10 AM tomorrow. If you are not registered before that time, you will not be able to vote on any issues brought before assembly.**

 There are public restrooms located in the hotel lobby.

 The chairperson will announce meeting format and break times.

 You will need your Service Manual.

 Please silence all cell phones and electronic devices.

Registration



# Group Representative (GR) 2

Basic Housekeeping at Assembly

🌈 Please remember this will probably be a long day/weekend. With that in mind, be kind to yourself and others. Please plan for your personal comfort. For example 🌈



If you have medical issues, come prepared with your snacks, medicines and pillows.

🌈 If you are always chilly, have a sweater, blanket, comfy socks, and slippers handy, so that you will be able to remain comfortable in the meetings and during lengthy discussions.

take  
care  
of  
your  
Self  
♥

# Group Representative (GR) 3

Basic Housekeeping at Assembly

🌈 Remember as a GR you are working for your group, as **an** Al-Anon member, for the good of Al-Anon, and Area 9.



🌈 Concept 3: "The right of decision makes effective leadership possible." You are not a "group robot." As you hear new information, you may find that, based on that information, you cannot vote the group conscience. You best represent your group by thinking for yourself and asking for guidance from your Higher Power.

# **Group Representative (GR) 4**

Basic Housekeeping at Assembly

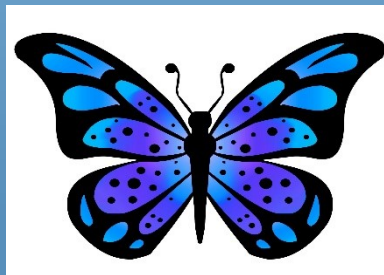
**Because each GR has only  
one vote you cannot  
represent more than one  
group.**



## **Group Representative (GR)**

Excerpts taken from 2022-2025 Service Manual, page 59:

Acts as liaison between  
the group and the District  
and between the  
group and the Assembly.





## Group Representative (GRs)

Excerpts taken from 2022-2025 Service Manual, page 59:

🦋 Becomes familiar with the current edition of the *Al-Anon/ Alateen Service Manual* (P-24/27) and encourages its use among group members.

🦋 Works through the District in helping to initiate public out-reach projects.

🦋 Encourages Alateen sponsorship in accordance with Area Alateen Safety and Behavioral Requirements.





# Group Representative (GR) 5

Excerpts taken from 2022-2025 Service Manual, page 59:

- 🦋 Is elected for a three-year term.
- 🦋 Encourages election of an Alternate GR.
- 🦋 This is a three year commitment and we understand that life happens. Be sure to have a Plan B in place. Having an Alternate GR is an excellent way to cover these bases.



🦋 Al-Anon and Alateen members who are also members of A.A. may not serve as GR or Alternate GR. See "Digest of Al-Anon and Alateen Policies," "Service Participation by Members of Al-Anon Family Groups Who Are also Members of Alcoholics Anonymous"

# Knowledge-Based Decision-Making 1

Excerpts taken from 2022-2025 Service Manual, pages 70-72:

Uses Knowledge-Based Decision-Making process to reach an informed group conscience (KBDM)

Members need access to all the information about the issue, they need clarity in what their discussions how to accomplish, and they trust each other's motives and capabilities



# Knowledge-Based Decision-Making 2

Excerpts taken from 2022-2025 Service Manual, page 70-72:

## Elements:






- 🦋 Communication between leadership and membership
- 🦋 All decision makers have access to common information
- 🦋 Discussion before deliberation
- 🦋 We exist in a culture of trust
- 🦋 We trust the competency of our partners



# Knowledge-Based Decision-Making 3

Excerpts taken from 2022-2025 Service Manual, page 70-72:

## 5 KBDM Questions

-  What do we know about our members' (or prospective members) needs regarding this discussion?
-  What do we know about the capacity and strategic position of the Area (or District or Group) relative to this discussion?
-  What do we know about current realities, evolving dynamics of the world and our fellowship's environment that is relevant to this discussion? What are the pros and cons?
-  What are the ethical implications of our choices? Will our decisions be in line with our spiritual principles?
-  What do we wish we knew, but don't?



# Group Representatives (GR)

Excerpts taken from 2022-2025 Service Manual, page 59:



🦋 Serves as local representative of their group language Al-Anon/Alateen magazine, *The Forum*, *Al-Anon y Alateen en acción*, or *Le lien* by:

- 🦋 Acquainting members with its usefulness.
- 🦋 Suggesting personal subscriptions.
- 🦋 Suggesting group subscriptions to the WSO.
- 🦋 Encouraging members to write articles.

# The GR and World Service

Excerpts taken from 2022-2025 Service Manual, page 145:

Through the contacts he makes with other GRs and the Area World Service Committee members at Assembly, the GR can gain knowledge of Al-Anon world service and the purpose and work of the Conference.

🌈 This will enable you to explain these to the group. The GR should be allowed regular time at group meetings to convey information concerning Al-Anon world service affairs.





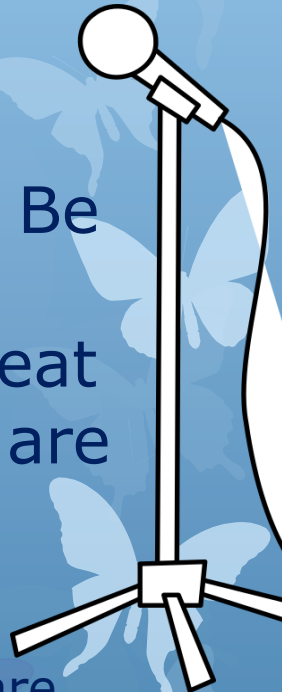
# The GR and the Area Assembly

Excerpts taken from 2022-2025 Service Manual, page 145:

In addition to attending the election Assembly, the GR is expected to attend all scheduled Assemblies (and any interim Assembly the Chairman or Delegate considers necessary) and to report back to the group. The GR or Alternate GR, in the GR's absence, votes at the Assembly. Each group has one vote.

*GRs are encouraged to present questions during assembly.* This can help to clarify any questions. Be mindful that others may ask similar questions. Please be consciences of others' time. Do not repeat questions that have already been presented. You are allowed two minutes to present a question or comment.

All motions must be filed and seconded by GRs in writing. Forms are normally kept at the Alternate Delegate's basket. Be available for all votes.





# **Our Area Website**

## **AFGArea9.org**

 Information for your Service Position

 Area Events

 Documents

 Resources

 Member Pages

 Meetings

 Alateen is Al-Anon!

 Knowledge Based Decision Making

 Reports for Area Assemblies, and much more!

# AFGArea9.org

← → ↻ afgarea9.org



HOME

FIND A MEETING

EVENTS

RESOURCES

CALENDAR

CONTACT

CONTRIBUTIONS

MORE...

CART (0)

# WELCOME



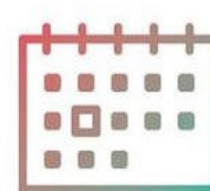
FIND A MEETING



EVENTS



RESOURCES



CALENDAR

ALATEEN

TAKE A  
SURVEY: AREA

STEPS,  
TRADITIONS &



# Service Sponsorship

Excerpts taken from 2022-2025 Service Manual, page 45:

Our Service Manual recommends Service Sponsors to trusted servants as guides in applying the Traditions and Concepts of Service, and shares experience, strength, and through service to Al-Anon.

- 🌈 Service sponsorship helps both the service Sponsor and the sponsee acquire new skills while being an example of personal growth through service.
- 🌈 Al-Anon Family Groups worldwide benefits when members are enthusiastic about service.
- 🌈 For more information about service sponsorship, read the pamphlet Service Sponsorship–Working Smarter, Not Harder (P-88).

Sponsorship  
Available

# Finances 1

Excerpts taken from 2022-2025 Service Manual, pages 162-163:

The GR should be mindful that Al-Anon and Alateen are traditionally self-supporting.

🌈 Each group covers its group expenses, such as rent and literature.

🌈 Each group provides its GR with sufficient funds to fulfill the GR duties including participation in Assembly.



# Finances 2

Excerpts taken from 2022-2025 Service Manual, pages 162-163:

- 🦋 Each group supports the District Activities.
- 🦋 Each group supports the Area by contributing to cover expenses of the Assembly and the cost of sending the Delegate to the World Service Conference.
- 🦋 Each group supports the WSO in recognition of the services provided to the groups.



# Finances 3

Excerpts taken from 2022-2025 Service Manual, pages 162-163:

## **GRs communicate appeals for support to their groups**

🦋 Make sure the appeals for support of from the WSO, sent four times a year (February, May, August, and November), are read to the group.

🦋 You may personally present to your group the appeals sent by the Area Treasurer for support of the Assembly and give the group Treasurer the name and address of the Area Treasurer.

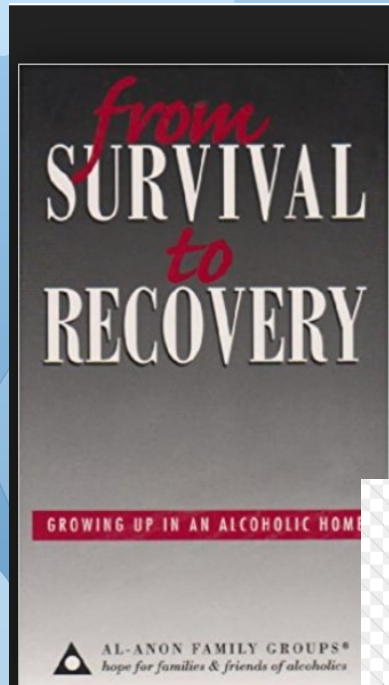




# Conference Approved Literature (CAL)

Excerpts taken from 2022-2025 Service Manual, page 146:

The GR, recognizing the importance of CAL, makes sure that the pamphlet Why Conference Approved Literature? (P-35) is always available at the meeting.



Encourages use of a variety of CAL for meeting topics.



# Questions? Comments...

